



# Silver Building

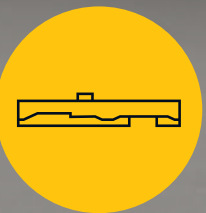
Venue Hire Pack

The Silver Building is a ground-breaking cultural centre and workspace in London's Royal Docks.

Constructed in 1964, the Brutalist monument was originally home to Carlsberg-Tetley Brewing company. After lying derelict for 18 years, the site has been transformed into a bustling cultural work and events space.

As a workspace, the building is home to tenants such as esteemed British menswear designer Craig Green and radical set design company Block9. As a cultural space, The Silver Building is increasingly becoming a vital and unique addition to London's arts and culture ecosystem.

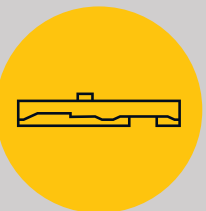
This venue pack provides an insight into the various spaces on offer for hire.



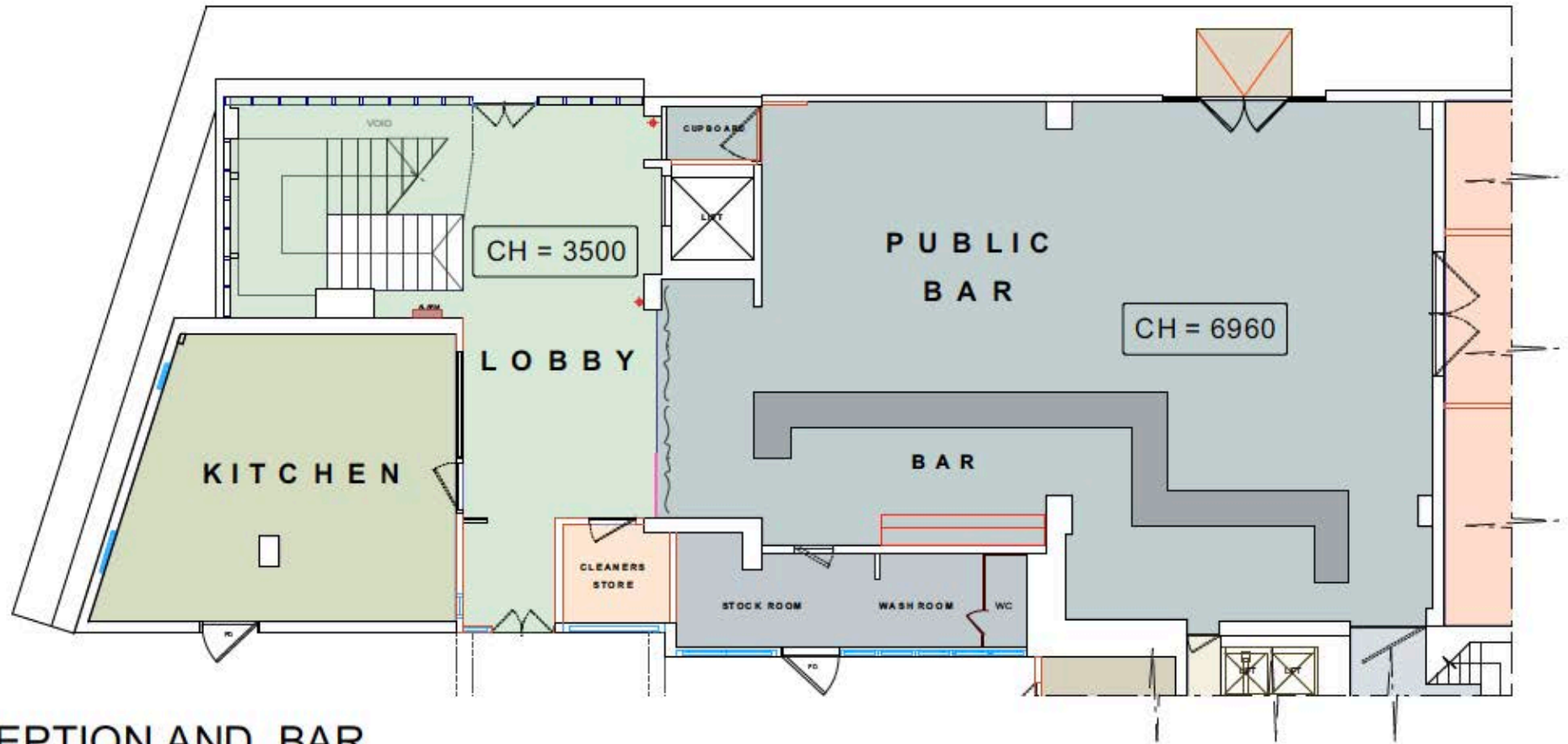
## BAR / CAFÉ

226 M2

- Seated & standing capacity 300
- Fully licensed bar
- Bespoke tables and concrete bar
- Fridges / Ice machines / Dishwasher
- Dimmable lighting
- Fully equipped kitchen

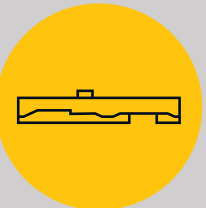






1

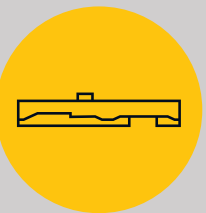
RECEPTION AND BAR  
1" = 20 ft

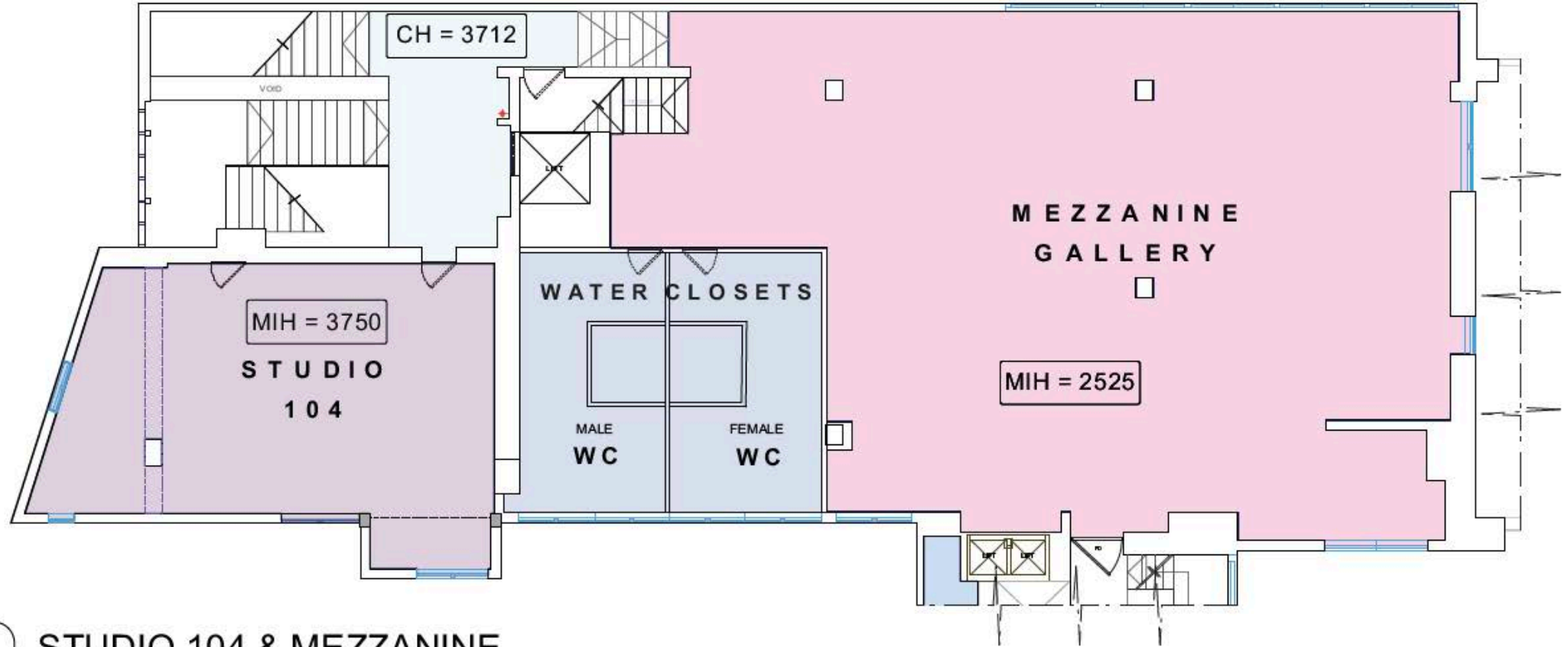


# THE GALLERY

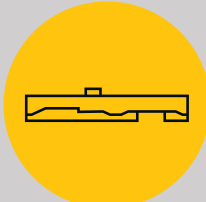
197 M2

- Capacity 300
- Adjustable lighting
- Flexible hanging system





1 STUDIO 104 & MEZZANINE  
1" = 20 ft

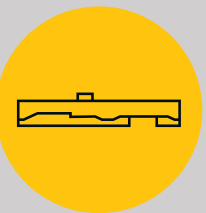




# LOWER BOILER ROOM

65 M2

- Raw industrial shoot and exhibition space

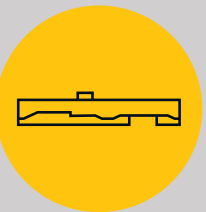




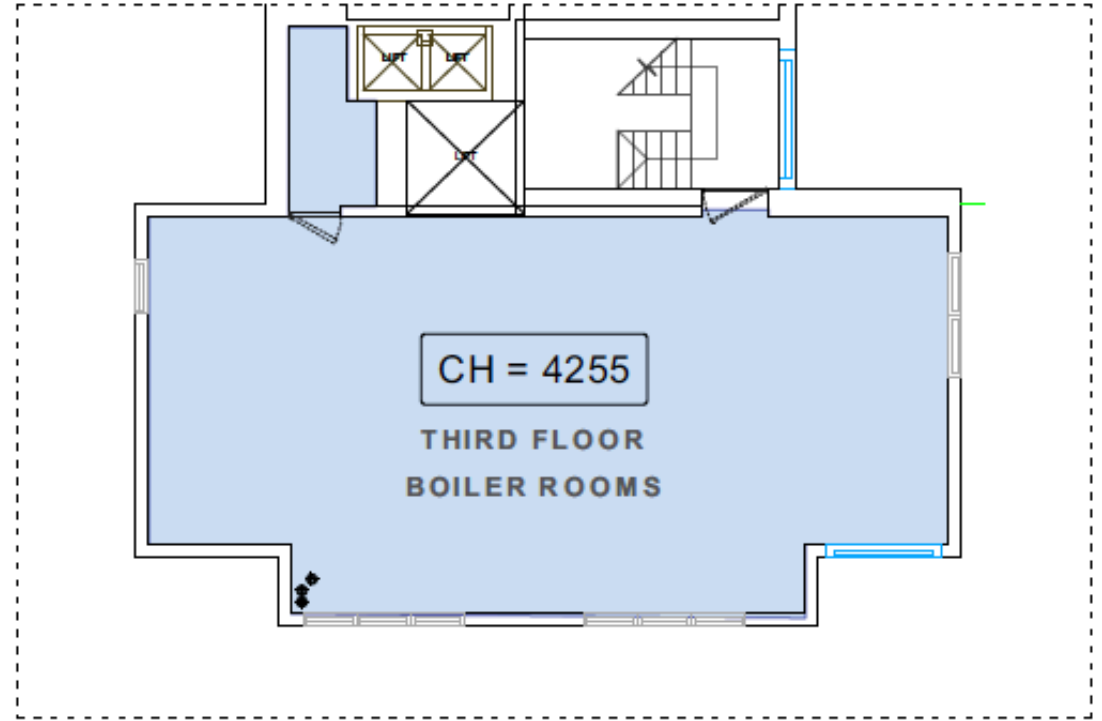
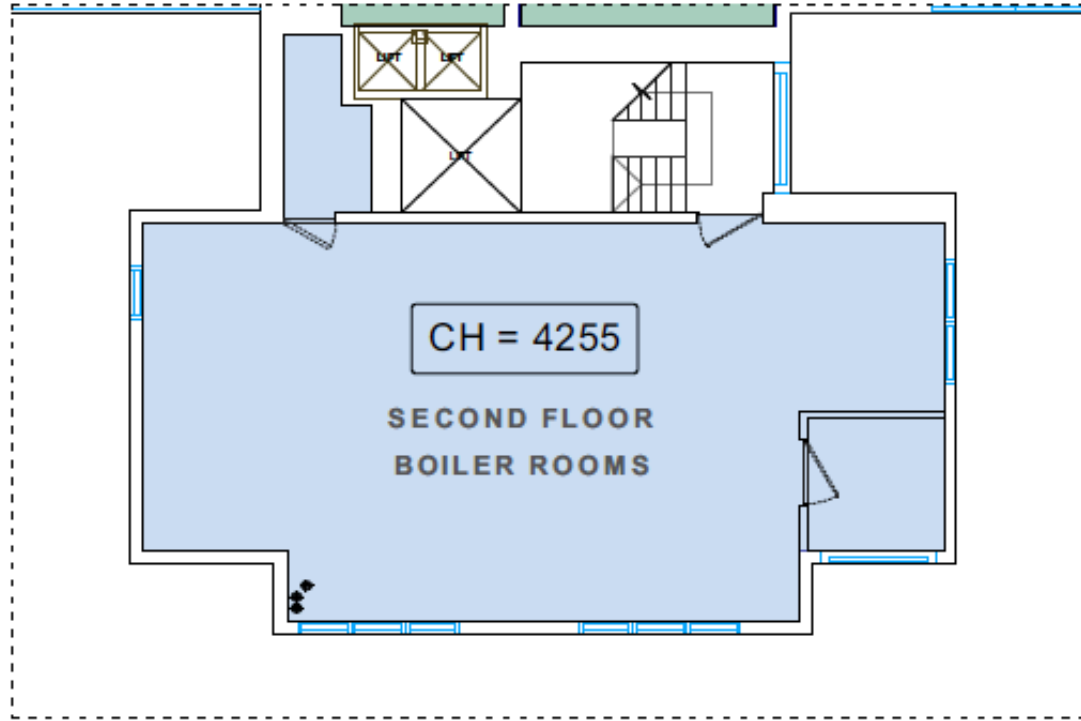
## UPPER BOILER ROOM

65 M2

- Raw industrial shoot and exhibition space

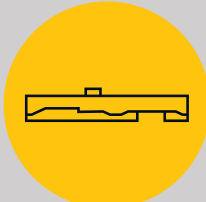






2 SECOND FLOOR  
1" = 20 ft

3 THIRD FLOOR  
1" = 20 ft



## PREVIOUS EVENTS

We have previously hosted events for Converse, Ryuichi Sakamoto (MODE Festival), Patta / Deviation, NTS, Block9 & the Re-Textured festival.

The building has been used for numerous TV / Film and advertorial shoots including: Levis, Rellik (BBC), Informer (BBC), Bounty Hunters (Sky One), Nike and Balmain.

Art Exhibitions include: Silver Sensucht (Group show), Underground On The Up (Group show), The London Festival of Architecture, Pervillion and student shows for the UAL and RCA.

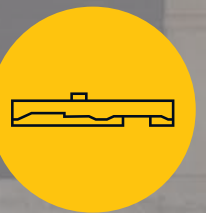
Monthly events at the building include: Jazz Nights, Comedy evenings, Film Screenings, Yoga, Pop-up food and cocktail events, artist workshops and various local community activities.





## INFORMATION

- 24 Hour security
- Secure storage areas
- Movable chairs and tables
- A/V equipment hire company based on site
- Separate Male & Female WCs
- Free WIFI
- Separate kitchen with fridge, sink and preparation areas
- Large exterior yard
- Free parking
- Projector and screen available
- Late license
- A-frame and window branding available



## LOCATION AND TRAVEL

### DLR

West Silvertown station

Royal Victoria station

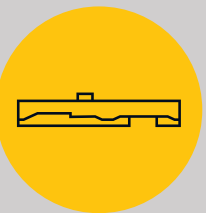
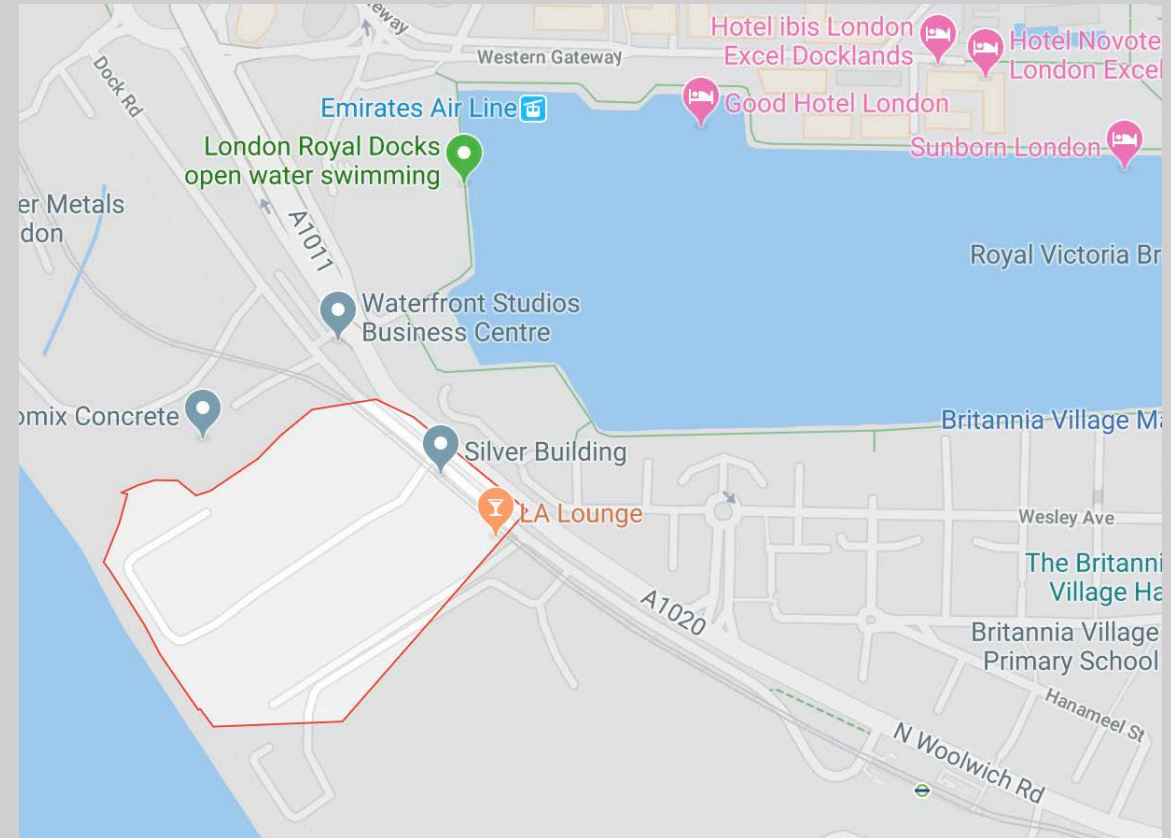
### UNDERGROUND

Canning Town (Jubilee line)

### BUS

474

Emirates Cable Car from North Greenwich





The Silver Building  
60 Dock Road  
London  
E16 1YZ

[www.thesilverbuilding.com](http://www.thesilverbuilding.com)

T: 020 3903 9903

Joel Davies: [joel@thesilverbuilding.com](mailto:joel@thesilverbuilding.com)

Charlotte Robinson: [charlotte@thesilverbuilding.com](mailto:charlotte@thesilverbuilding.com)

