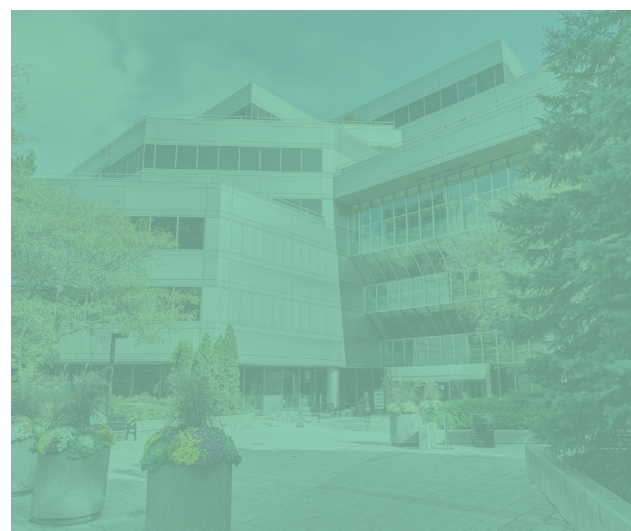




90 Sheppard Ave E
Toronto



INFINITE OPPORTUNITY

90 Sheppard is located in Toronto's North Yonge Business Node. With exceptional connectivity and flexible floor plates with endless design options, this building gives businesses endless work space options and building features that add value to businesses and their employees.

Move-In Ready Suites

Tenant Lounge

Exclusive Patios

Collaborate by Crown

Workfit by Crown

Underground Parking

Fast TTC & Highway Access

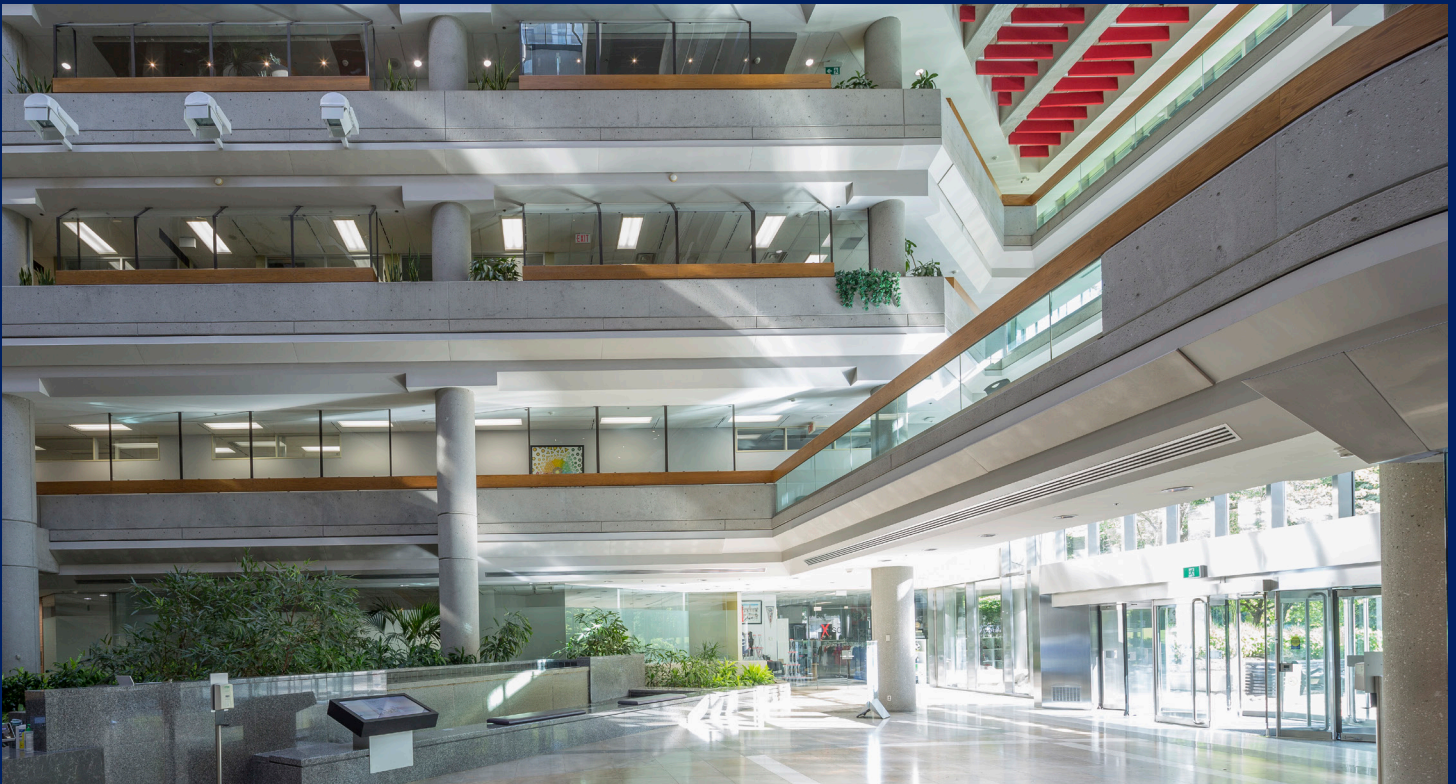
EV Charging Stations

Steps Away from
Yonge & Sheppard Centre

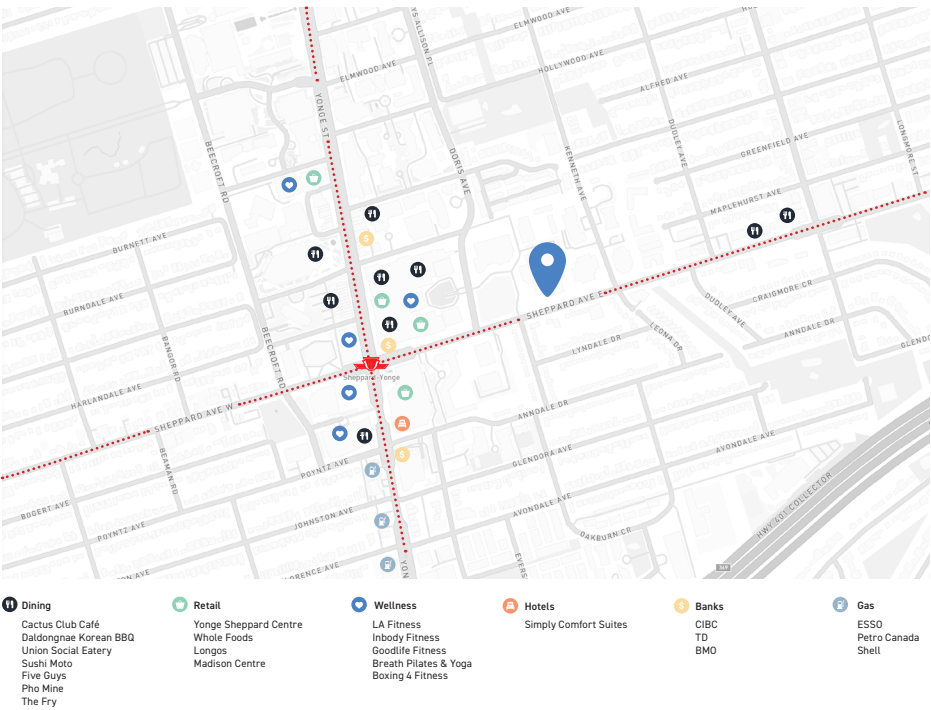


Tenant Lounge





AREA & AMENITIES



AWARDS & CERTIFICATIONS



For more information about the property or to arrange a tour, please contact:

Ryan McAskile*
 Director, Leasing
 647-727-4544
 rmcaskile@crp-cpmi.com

